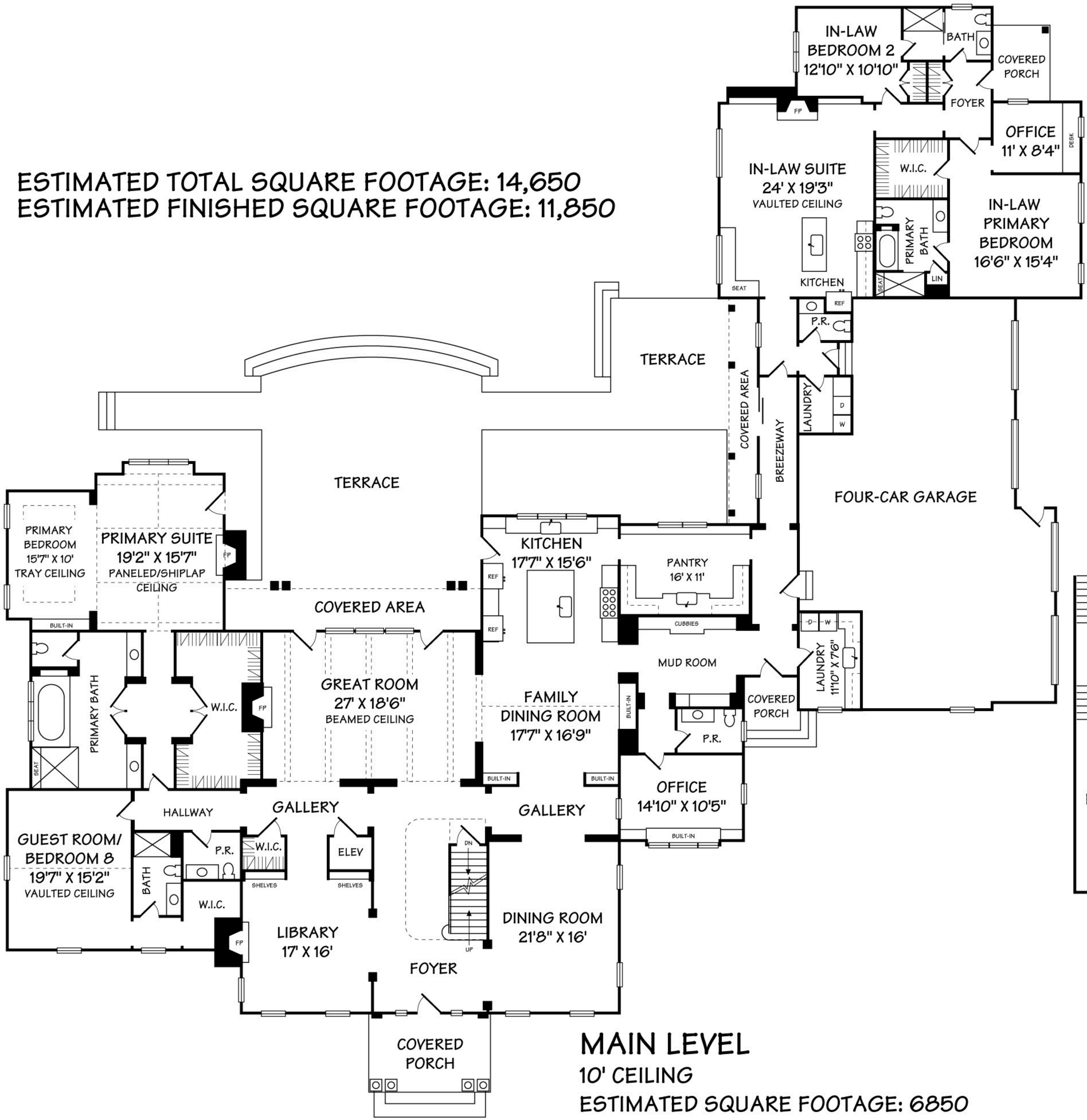
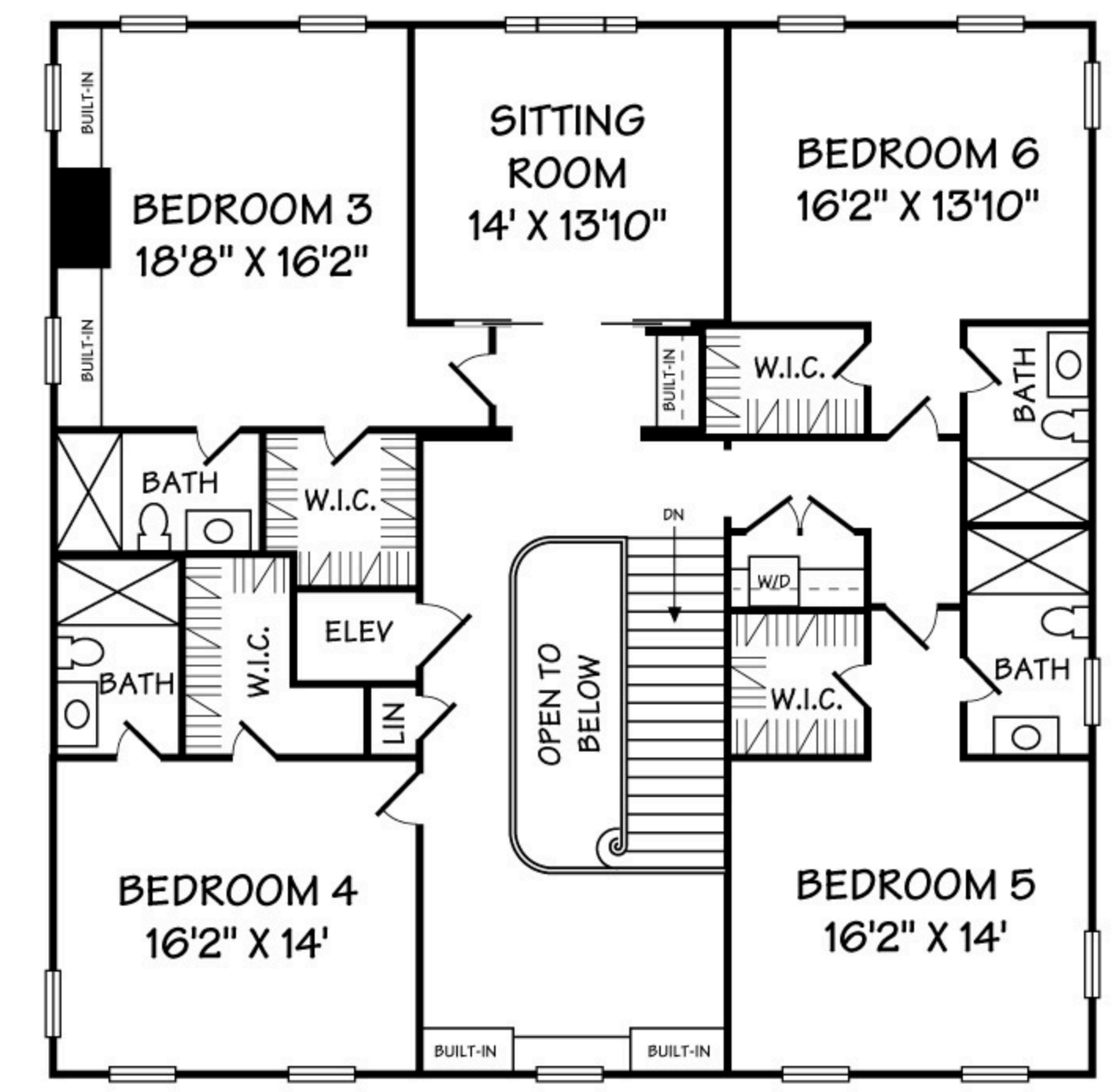


ESTIMATED TOTAL SQUARE FOOTAGE: 14,650
 ESTIMATED FINISHED SQUARE FOOTAGE: 11,850



SECOND LEVEL
 9'6" CEILING
 ESTIMATED SQUARE FOOTAGE: 2350



LOWER LEVEL
 9'10" CEILING
 ESTIMATED SQUARE FOOTAGE: 2650

